

REVISIONS		
DATE	NAME	NO.
8/14/2007	JAMES K. WALZ	24GS03402400
03/06/2008	JAMES K. WALZ	24GS03402400
05/20/2011	RICHARD A. MORALLE, P.L.S.	GB25863
08/30/2013	RICHARD A. MORALLE, P.L.S.	GB25863
12/31/2013	MICHAEL S. FINNEGAN, P.L.S.	GS34851

INDEX		LEGEND		DETAIL	
SHEET NUMBER	1	LOT LINE	_____	LOT NUMBER	158
BLOCK NUMBER	1	BLOCK LIMIT	=====	LOT DIMENSION	125'
ROADS	FRONT ST.	MATCH LINE	=====	ACREAGE	75.0 AC.
BLOCK LIMIT	B/L	BULKHEAD LINE	=====		
MUNICIPAL BOUNDARY	-----				
SHEET LIMIT LINE (INDEX SHEET)	- - - - -				



I HEREBY CERTIFY THAT THIS MAP HAS BEEN REVISED UNDER MY IMMEDIATE SUPERVISION, AND COMPLIES WITH THE LAWS OF THE STATE OF NEW JERSEY.

*Michael S. Finnegan*  
 MICHAEL S. FINNEGAN  
 NEW JERSEY PROFESSIONAL LAND SURVEYOR  
 LICENSE NO. GS34851

I HEREBY CERTIFY THAT THIS MAP AND THE SURVEY HAS BEEN MADE UNDER MY IMMEDIATE SUPERVISION, AND COMPLIES WITH THE LAWS OF THE STATE OF NEW JERSEY.

JAMES K. WALZ, L.S. - LIC. NO. 24GS03402400

THIS SHEET HAS BEEN REDRAWN USING COMPUTER AIDED DRAFTING/DESIGN (CAD/D) BASED ON THE MAP PREPARED BY GEORGE W. EDWARDS, P.L.S. DATED AUGUST 1975.

NOTE: BLOCK DIMENSIONS AND STREET WIDTHS NOT TO SCALE.

THIS TAX MAP SUPERSEDES THE TAX MAP PREPARED BY GEORGE W. EDWARDS, P.L.S. DATED AUGUST 1975 AND APPROVED SEPTEMBER 15, 1975. THE APPROVED ORIGINAL IS ON FILE IN THE OFFICE OF THE ENGINEER.

THE AREAS, BOUNDARIES AND DIMENSIONS SHOWN ON THIS TAX MAP ARE DERIVED FROM GROUND SURVEYS, AERIAL SURVEYS, AND RECORDED PLANS, MAPS, DEEDS, WILLS, AND ARE TO BE USED FOR ASSESSMENT PURPOSES ONLY.

THIS MAP REVISED AS NOTED

ORIGINAL APPROVED AS A TAX MAP BY THE N.J. DIVISION OF TAXATION

APRIL 30, 2008  
 SERIAL NO. 918

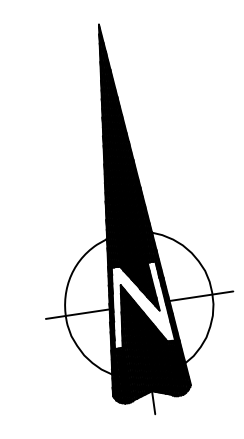
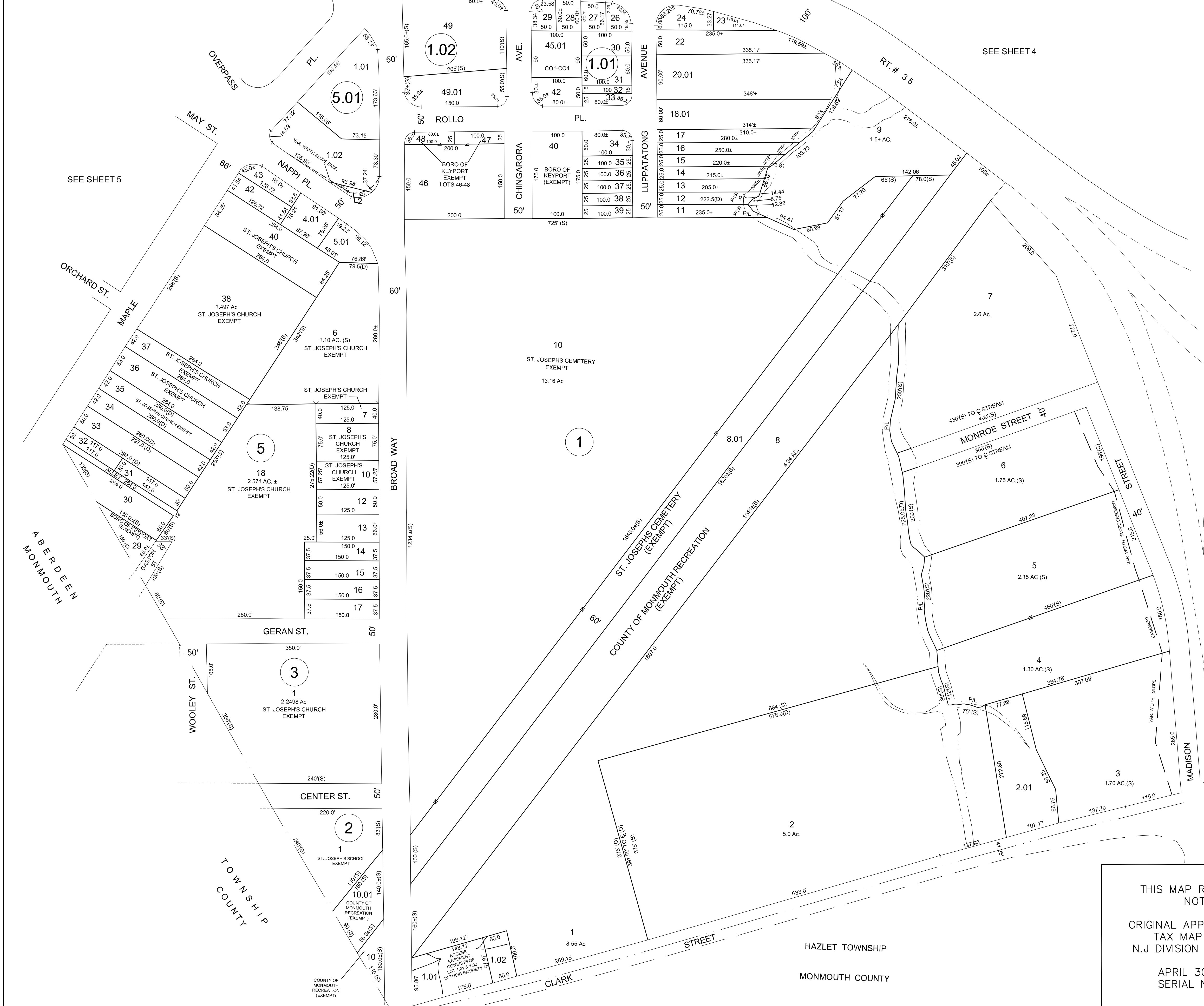
TAX MAP  
 BOROUGH OF KEYPORT

MONMOUTH COUNTY, NEW JERSEY  
 SCALE: 1" = 100' AUGUST 2007

JAMES K. WALZ

PROFESSIONAL LAND SURVEYOR  
 NEW JERSEY LICENSE NO. 24GS03402400  
 833 ROUTE 9 NORTH, CAPE MAY COURT HOUSE, NJ 08210  
 TO SHOW CONDITIONS AS OF DECEMBER 2013

REVISIONS		
DATE	NAME	LIC. No.
5/20/11	RICHARD A. MORALLE, P.E., P.L.S.	GB25863
12/31/11	RICHARD A. MORALLE, P.E., P.L.S.	GB25863
12/31/13	MICHAEL S. FINNEGAN, P.L.S.	GS34851
2/3/2020	ROBERT K. SANCHEZ, P.L.S.	43294
6/9/2020	ROBERT K. SANCHEZ, P.L.S.	43294

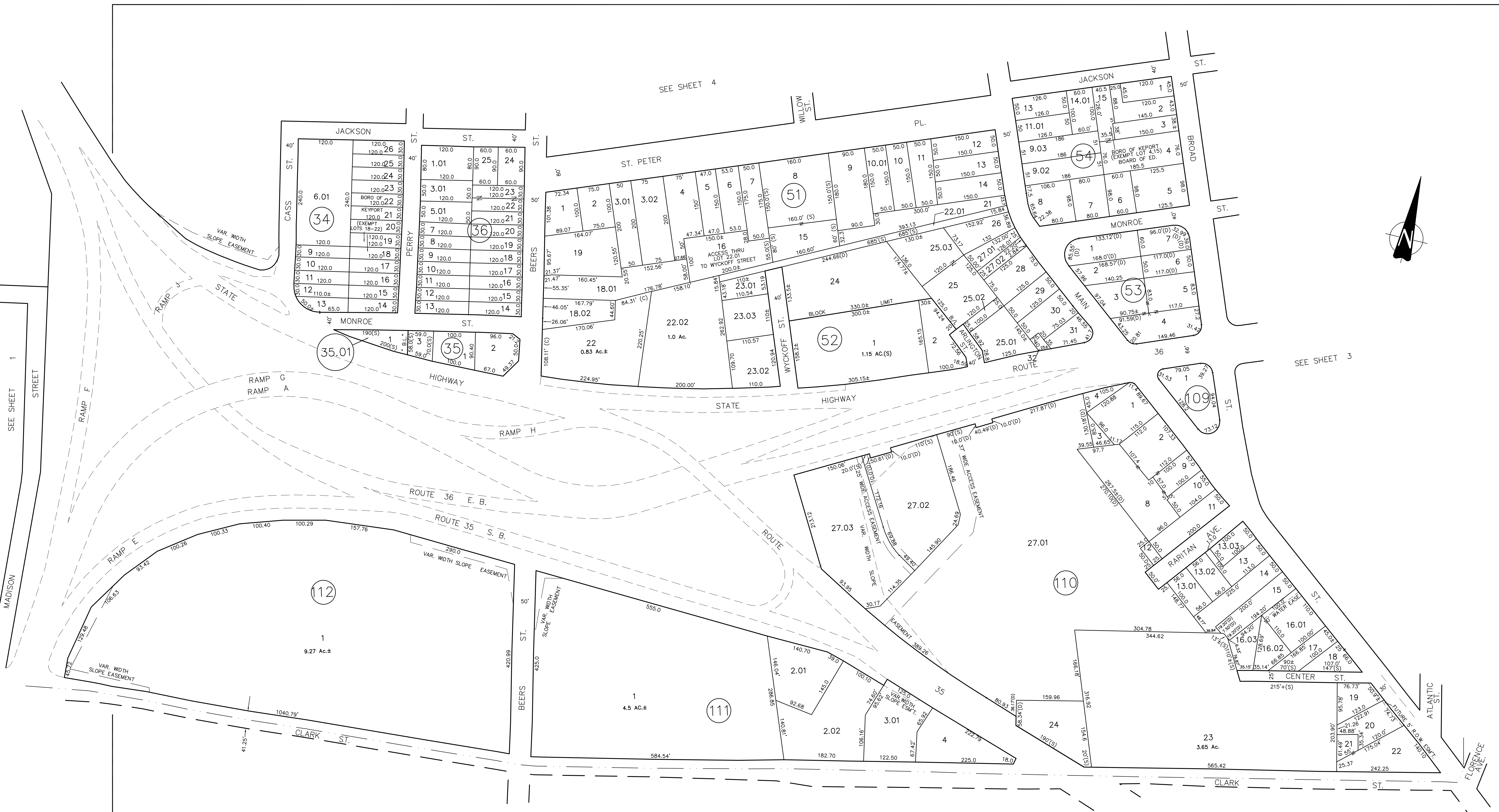


SEE SHEET 2

THIS SHEET HAS BEEN REDRAWN USING COMPUTER AIDED DRAFTING/DESIGN (CAD/D) BASED ON THE MAP PREPARED BY GEORGE W. EDWARDS, P.L.S. DATED AUGUST 1975.

THIS MAP REVISED AS NOTED  
 ORIGINAL APPROVED AS A TAX MAP BY THE N.J DIVISION OF TAXATION  
 APRIL 30, 2008  
 SERIAL NO. 918

**TAX MAP**  
**BOROUGH OF KEYPORT**  
 MONMOUTH COUNTY, NEW JERSEY  
 SCALE: 1" = 100' AUGUST 2007  
**JAMES K. WALZ**  
 PROFESSIONAL LAND SURVEYOR  
 NEW JERSEY LICENSE NO. 24GS03402400  
 833 ROUTE 9 NORTH, CAPE MAY COURT HOUSE, NJ 08210  
 TO SHOW CONDITIONS AS OF DECEMBER 2013



SEE SHEET 4

SEE SHEET 3

SEE SHEET 1

HAZLET  
MONMOUTH TOWNSHIP  
COUNTY

THIS SHEET HAS BEEN REDRAWN USING  
COMPUTER AIDED DRAFTING/DESIGN (CAD/D) BASED ON THE MAP PREPARED BY GEORGE W. EDWARDS, P.L.S. DATED AUGUST 1975.

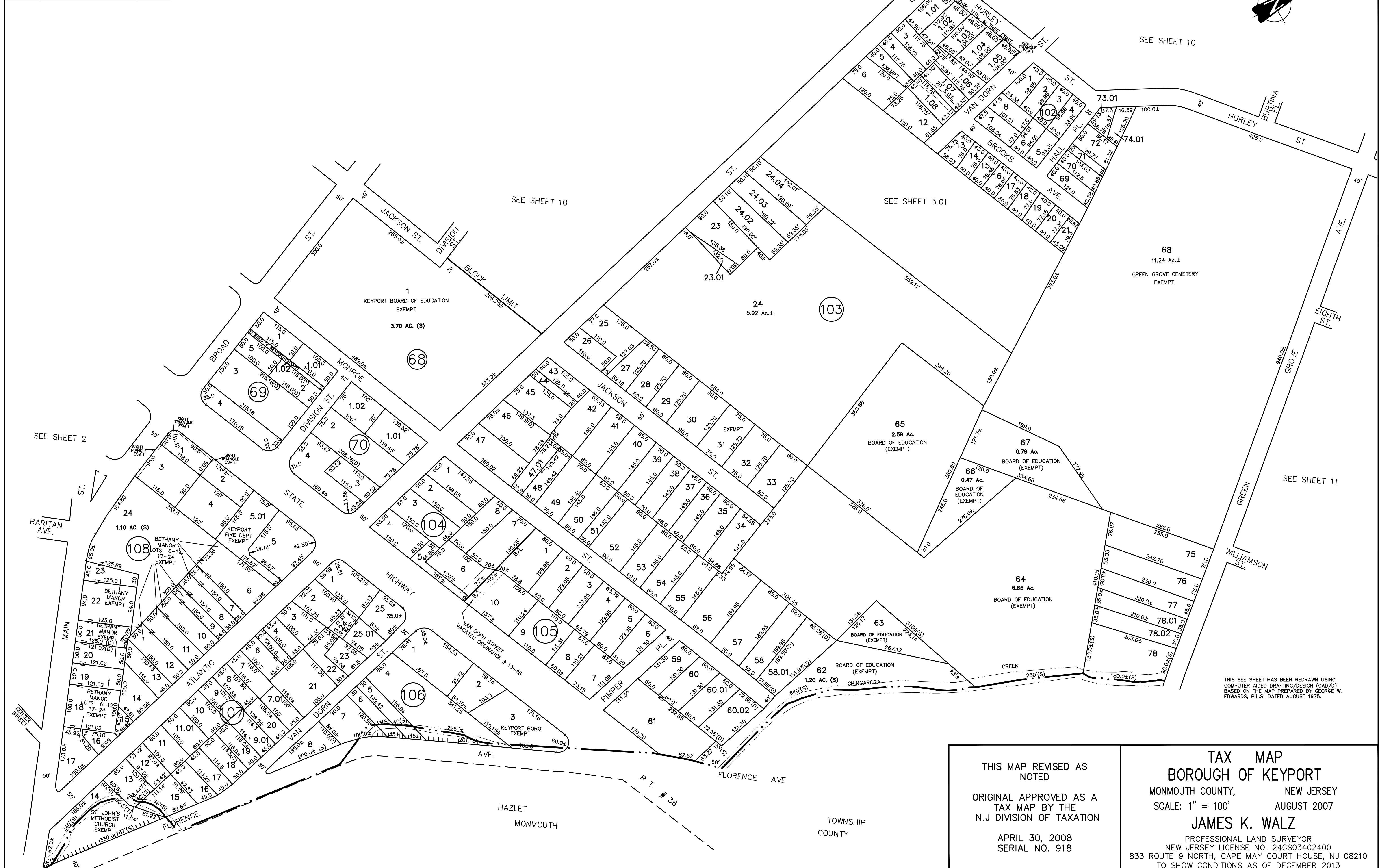
REVISIONS		
DATE	NAME	LIC. No.
5/20/11	RICHARD A. MORALLE, P.E., P.L.S.	GB25863
12/31/13	MICHAEL S. FINNEGAN, P.L.S.	GS34851
5/15/20	ROBERT K. SANCHEZ	43294

THIS MAP REVISED AS NOTED  
ORIGINAL APPROVED AS A TAX MAP BY THE N.J. DIVISION OF TAXATION  
APRIL 30, 2008  
SERIAL NO. 918

**TAX MAP**  
**BOROUGH OF KEYPORT**  
MONMOUTH COUNTY, NEW JERSEY  
SCALE: 1" = 100'  
AUGUST 2007  
**JAMES K. WALZ**  
PROFESSIONAL LAND SURVEYOR  
NEW JERSEY LICENSE NO. 24GS03402400  
833 ROUTE 9 NORTH, CAPE MAY COURT HOUSE, NJ 08210  
TO SHOW CONDITIONS AS OF DECEMBER 2013



REVISIONS		
DATE	NAME	LIC. No.
5/20/11	RICHARD A. MORALLE, P.E., P.L.S.	GB25863
12/31/13	MICHAEL S. FINNEGAN, P.L.S.	GS34851

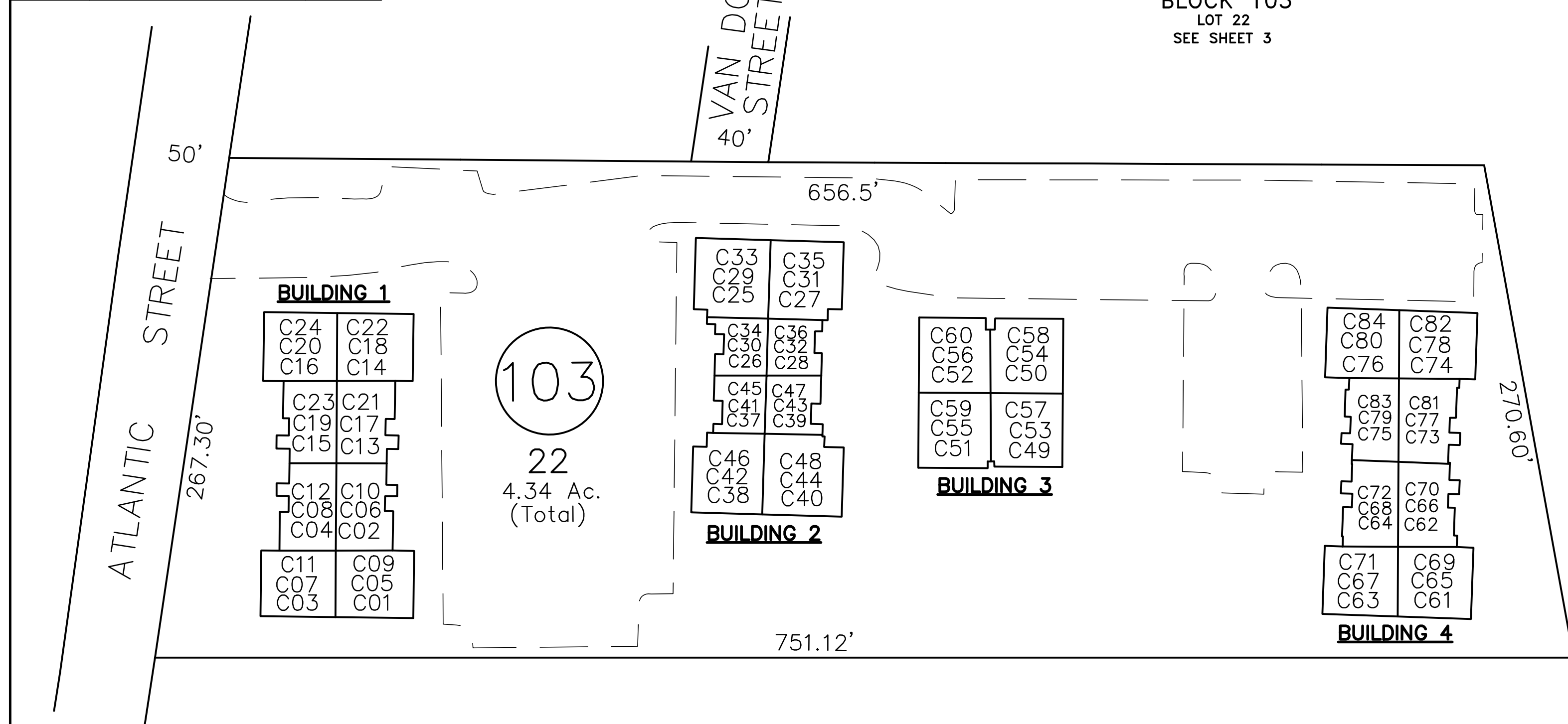


THIS SEE SHEET HAS BEEN REDRAWN USING COMPUTER AIDED DRAFTING/DESIGN (CAD/D) BASED ON THE MAP PREPARED BY GEORGE W. EDWARDS, P.L.S. DATED AUGUST 1975.

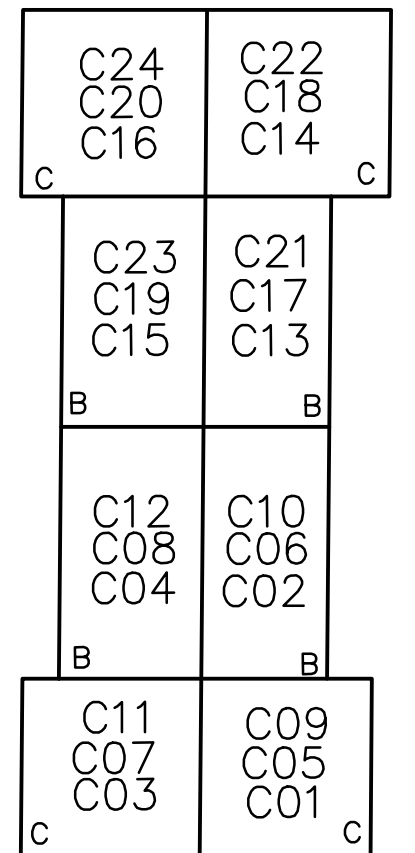
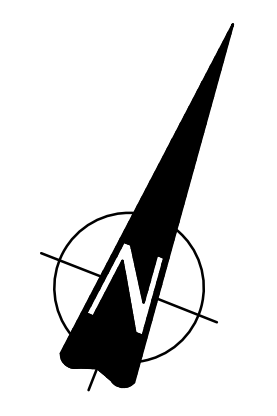
THIS MAP REVISED AS NOTED  
 ORIGINAL APPROVED AS A TAX MAP BY THE N.J. DIVISION OF TAXATION  
 APRIL 30, 2008  
 SERIAL NO. 918

**TAX MAP**  
**BOROUGH OF KEYPORT**  
 MONMOUTH COUNTY, NEW JERSEY  
 SCALE: 1" = 100'  
 AUGUST 2007  
**JAMES K. WALZ**  
 PROFESSIONAL LAND SURVEYOR  
 NEW JERSEY LICENSE NO. 24GS03402400  
 833 ROUTE 9 NORTH, CAPE MAY COURT HOUSE, NJ 08210  
 TO SHOW CONDITIONS AS OF DECEMBER 2013

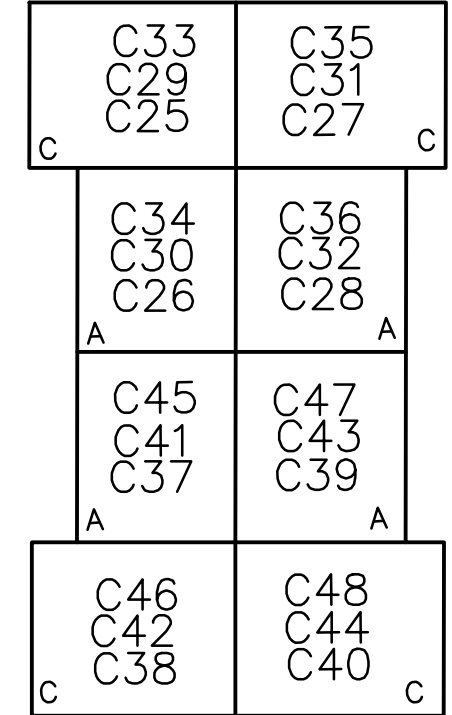
REVISIONS		
DATE	NAME	LIC. No.



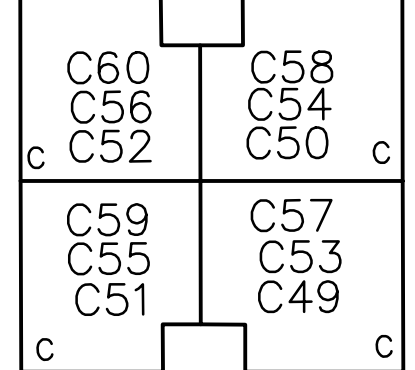
GATEWAY PARK CONDOMINIUMS						
LOT #	QUALIFIER	BUILDING	UNIT NUMBER	UNIT TYPE	FLOOR	AREA (SF)
22	C01	1	1	C	1	1,126
22	C02	1	2	B	1	964
22	C03	1	3	C	1	1,126
22	C04	1	4	B	1	964
22	C05	1	5	C	2	1,126
22	C06	1	6	B	2	964
22	C07	1	7	C	2	1,126
22	C08	1	8	B	2	964
22	C09	1	9	C	3	1,126
22	C10	1	10	B	3	964
22	C11	1	11	C	3	1,126
22	C12	1	12	B	3	964
22	C13	1	13	B	1	964
22	C14	1	14	C	1	1,126
22	C15	1	15	B	1	964
22	C16	1	16	C	1	1,126
22	C17	1	17	B	2	964
22	C18	1	18	C	2	1,126
22	C19	1	19	B	2	964
22	C20	1	20	C	2	1,126
22	C21	1	21	B	3	964
22	C22	1	22	C	3	1,126
22	C23	1	23	B	3	964
22	C24	1	24	C	3	1,126
22	C25	2	25	C	1	1,126
22	C26	2	26	A	1	698
22	C27	2	27	C	1	1,126
22	C28	2	28	A	1	698
22	C29	2	29	C	2	1,126
22	C30	2	30	A	2	698
22	C31	2	31	C	2	1,126
22	C32	2	32	A	2	698
22	C33	2	33	C	3	1,126
22	C34	2	34	A	3	698
22	C35	2	35	C	3	1,126
22	C36	2	36	A	3	698
22	C37	2	37	A	1	698
22	C38	2	38	C	1	1,126
22	C39	2	39	A	1	698
22	C40	2	40	C	1	1,126
22	C41	2	41	A	2	698
22	C42	2	42	C	2	1,126
22	C43	2	43	A	2	698
22	C44	2	44	C	2	1,126
22	C45	2	45	A	3	698
22	C46	2	46	C	3	1,126
22	C47	2	47	A	3	698
22	C48	2	48	C	3	1,126
22	C49	3	49	C	1	1,126
22	C50	3	50	C	1	1,126
22	C51	3	51	C	1	1,126
22	C52	3	52	C	1	1,126
22	C53	3	53	C	2	1,126
22	C54	3	54	C	2	1,126
22	C55	3	55	C	2	1,126
22	C56	3	56	C	2	1,126
22	C57	3	57	C	3	1,126
22	C58	3	58	C	3	1,126
22	C59	3	59	C	3	1,126
22	C60	3	60	C	3	1,126
22	C61	4	61	C	1	1,126
22	C62	4	62	B	1	964
22	C63	4	63	C	1	1,126
22	C64	4	64	B	1	964
22	C65	4	65	C	2	1,126
22	C66	4	66	B	2	964
22	C67	4	67	C	2	1,126
22	C68	4	68	B	2	964
22	C69	4	69	C	3	1,126
22	C70	4	70	B	3	964
22	C71	4	71	C	3	1,126
22	C72	4	72	B	3	964
22	C73	4	73	B	1	964
22	C74	4	74	C	1	1,126
22	C75	4	75	B	1	964
22	C76	4	76	C	1	1,126
22	C77	4	77	B	2	964
22	C78	4	78	C	2	1,126
22	C79	4	79	B	2	964
22	C80	4	80	C	2	1,126
22	C81	4	81	B	3	964
22	C82	4	82	C	3	1,126
22	C83	4	83	B	3	964
22	C84	4	84	C	3	1,126



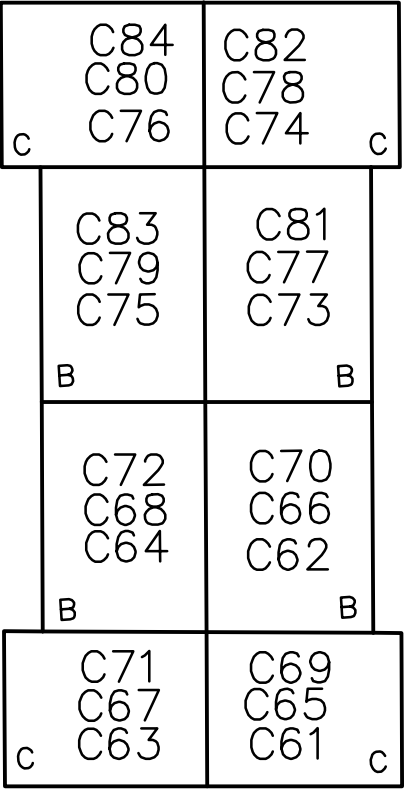
TYPICAL FLOOR PLAN  
BUILDING 1  
FLOORS 1, 2 & 3



TYPICAL FLOOR PLAN  
BUILDING 2  
FLOORS 1, 2 & 3

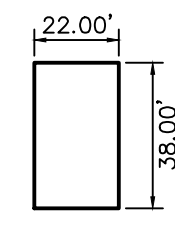


TYPICAL FLOOR PLAN  
BUILDING 3  
FLOORS 1, 2 & 3

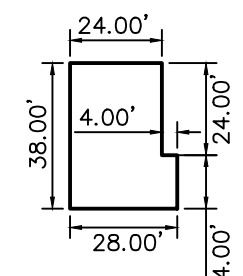


TYPICAL FLOOR PLAN  
BUILDING 4  
FLOORS 1, 2 & 3

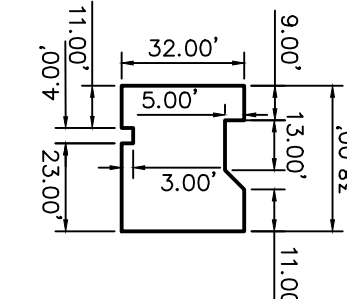
**LEGEND**  
(A) INDICATES UNIT TYPE



UNIT A



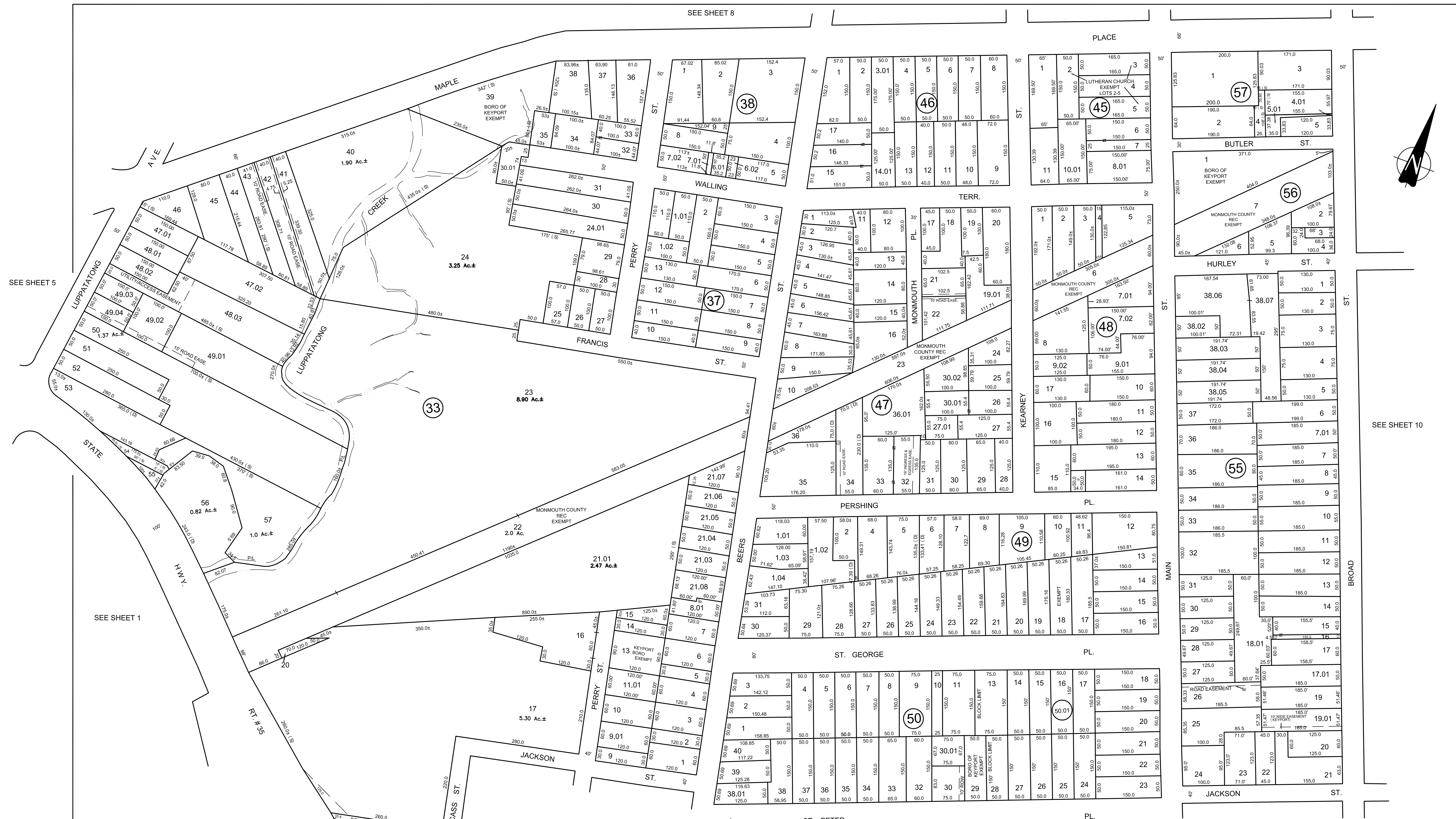
UNIT B



UNIT C

TAX MAP  
BOROUGH OF KEYPORT  
MONMOUTH COUNTY, NEW JERSEY  
SCALE: 1" = 50' AUGUST 2007  
MICHAEL S. FINNEGAN, P.L.S.  
PROFESSIONAL LAND SURVEYOR  
NEW JERSEY LICENSE NO. 24GS03485100  
11 TINDALL ROAD, MIDDLETOWN, NJ 07748  
TO SHOW CONDITIONS AS OF DECEMBER 2013





SEE SHEET 5

SEE SHEET 8

PLACE

SEE SHEET 1

SEE SHEET 10

SEE SHEET 2

THIS MAP REVISED AS NOTED  
 ORIGINAL APPROVED AS A TAX MAP BY THE N.J. DIVISION OF TAXATION  
 APRIL 30, 2008  
 SERIAL NO. 918

THIS SHEET HAS BEEN REDRAWN USING COMPUTER AIDED DRAFTING/DESIGN (CAD/D) BASED ON THE MAP PREPARED BY GEORGE W. EDWARDS, P.L.S. DATED AUGUST 1975.

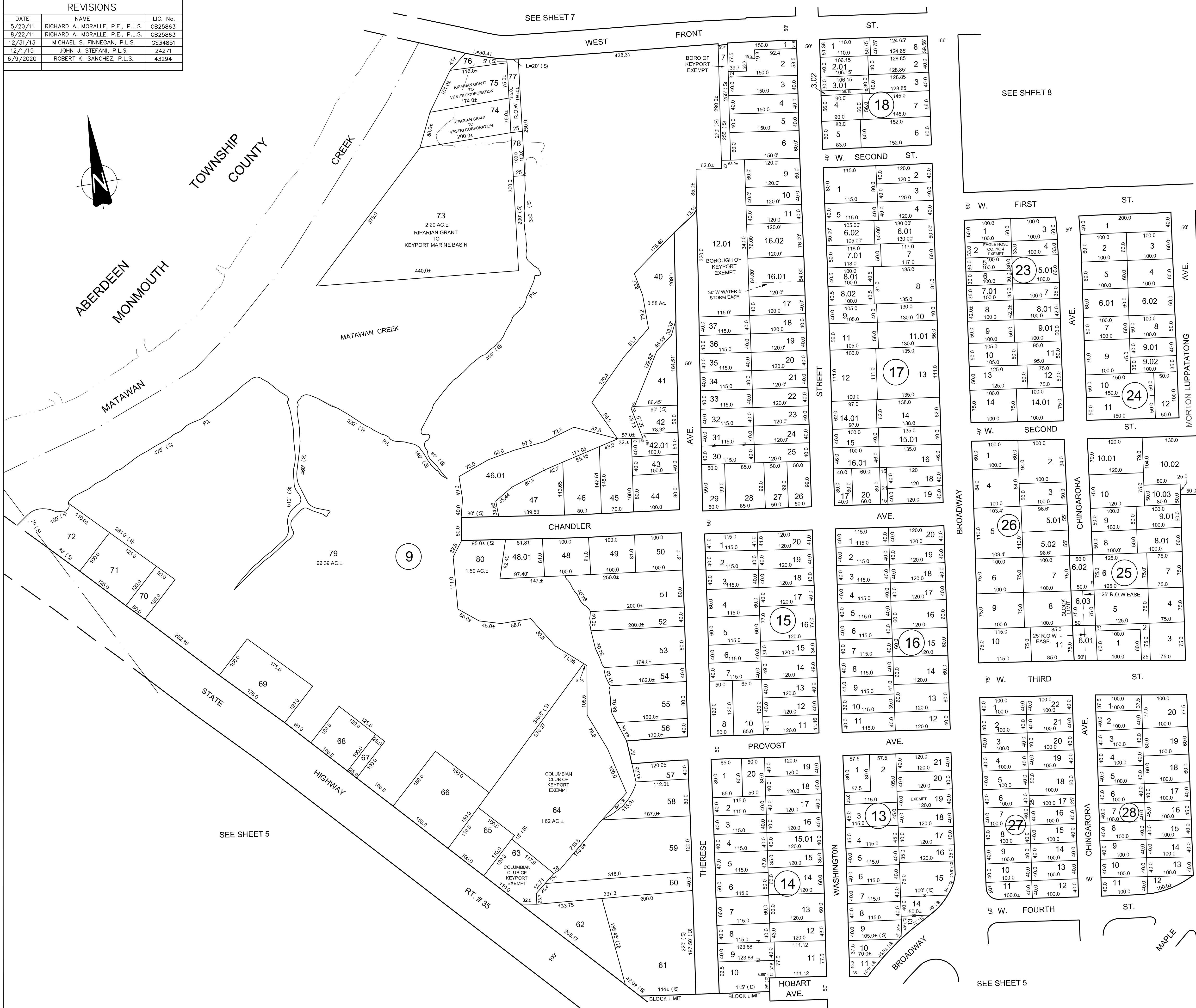
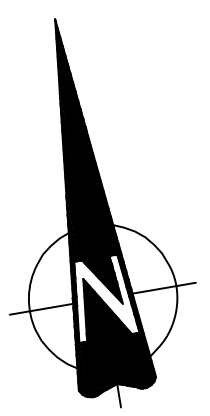
REVISIONS		
DATE	NAME	LIC. No.
5/20/11	RICHARD A. MORALLE, P.E., P.L.S.	GB25863
12/31/13	MICHAEL S. FINNEGAN, P.L.S.	GS34851
12/1/15	JOHN J. STEFANI, P.L.S.	24271
4/28/16	JOHN J. STEFANI, P.L.S.	24271

**TAX MAP**  
**BOROUGH OF KEYPORT**  
 MONMOUTH COUNTY, NEW JERSEY  
 SCALE: 1" = 100'  
 AUGUST 2007  
**JAMES K. WALZ**  
 PROFESSIONAL LAND SURVEYOR  
 NEW JERSEY LICENSE NO. 24GS03402400  
 833 ROUTE 9 NORTH, CAPE MAY COURT HOUSE, NJ 08210  
 TO SHOW CONDITIONS AS OF DECEMBER 2013





REVISIONS		
DATE	NAME	LIC. No.
5/20/11	RICHARD A. MORALLE, P.E., P.L.S.	G825863
8/22/11	RICHARD A. MORALLE, P.E., P.L.S.	G825863
12/31/13	MICHAEL S. FINNEGAN, P.L.S.	G834851
12/1/15	JOHN J. STEFANI, P.L.S.	24271
6/9/2020	ROBERT K. SANCHEZ, P.L.S.	43294

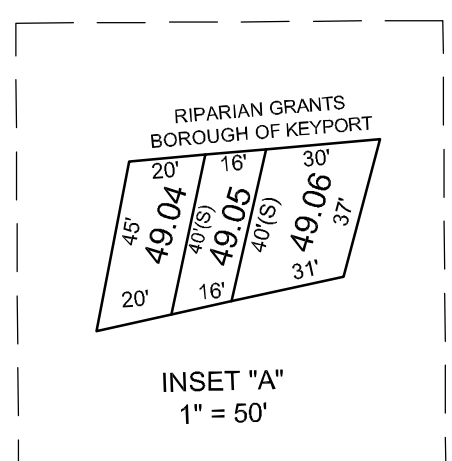
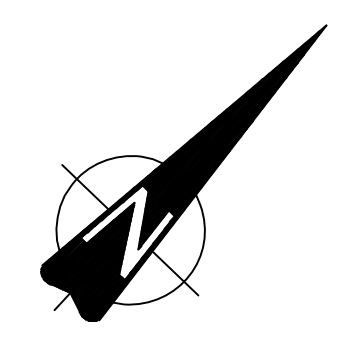
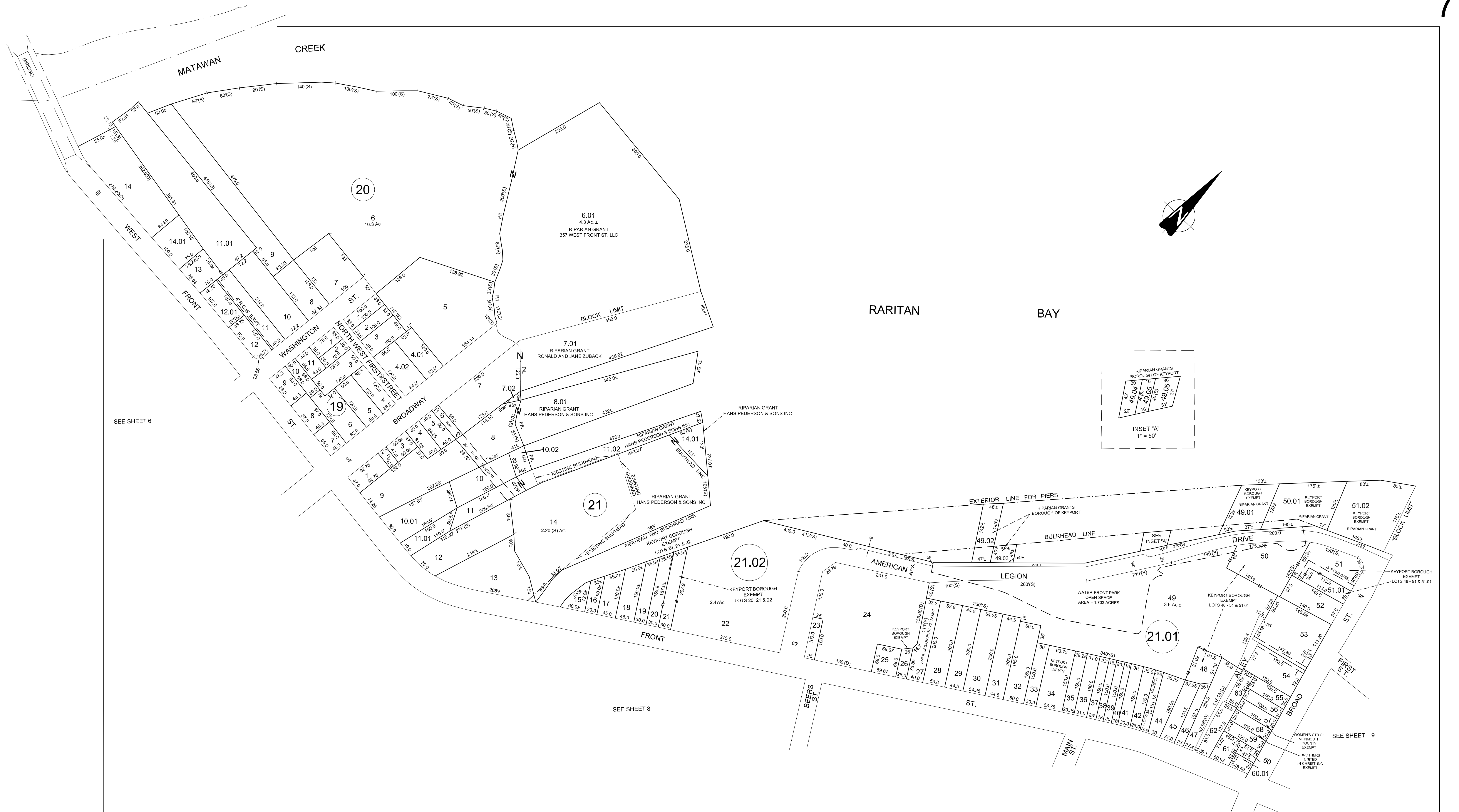


THIS SHEET HAS BEEN REDRAWN USING COMPUTER AIDED DRAFTING/DESIGN (CAD/D) BASED ON THE MAP PREPARED BY GEORGE W. EDWARDS, P.L.S. DATED AUGUST 1975.

THIS MAP REVISED AS NOTED  
 ORIGINAL APPROVED AS A TAX MAP BY THE N.J. DIVISION OF TAXATION  
 APRIL 30, 2008  
 SERIAL NO. 918

**TAX MAP**  
**BOROUGH OF KEYPORT**  
 MONMOUTH COUNTY, NEW JERSEY  
 SCALE: 1" = 100' AUGUST 2007  
**JAMES K. WALZ**  
 PROFESSIONAL LAND SURVEYOR  
 NEW JERSEY LICENSE NO. 24GS03402400  
 833 ROUTE 9 NORTH, CAPE MAY COURT HOUSE, NJ 08210  
 TO SHOW CONDITIONS AS OF DECEMBER 2013





SEE SHEET 6

SEE SHEET 8

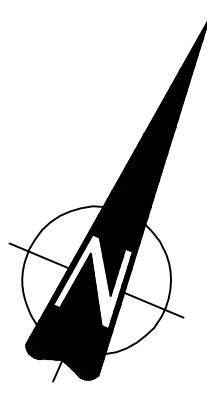
SEE SHEET 9

REVISIONS		
DATE	NAME	LIC. No.
12/31/11	MICHAEL S. FINNEGAN, P.L.S.	GS34851
12/31/13	MICHAEL S. FINNEGAN, P.L.S.	GS34851

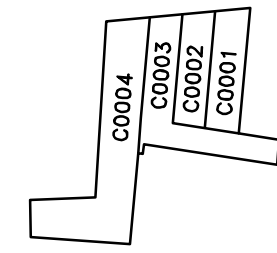
THIS SHEET HAS BEEN REDRAWN USING  
 COMPUTER AIDED DRAFTING/DESIGN (CAD/D) BASED  
 ON THE MAP PREPARED BY GEORGE W. EDWARDS,  
 P.L.S. DATED AUGUST 1975.

THIS MAP REVISED AS NOTED  
 ORIGINAL APPROVED AS A  
 TAX MAP BY THE  
 N.J. DIVISION OF TAXATION  
 OCTOBER 10, 2007  
 SERIAL NO. 918

TAX MAP  
 BOROUGH OF KEYPORT  
 MONMOUTH COUNTY, NEW JERSEY  
 SCALE: 1" = 100'  
 AUGUST 2007  
 JAMES K. WALZ  
 PROFESSIONAL LAND SURVEYOR  
 NEW JERSEY LICENSE NO. 24GS03402400  
 833 ROUTE 9 NORTH, CAPE MAY COURT HOUSE, NJ 08210  
 TO SHOW CONDITIONS AS OF DECEMBER 2013



**INSET "A"**  
**"52 WEST FRONT STREET CONDOMINIUM"**  
 BLOCK 39  
 LOT 38



**TYPICAL FLOOR PLAN**

LOT #	UNIT NUMBER	FLOOR	QUALIFIER	% OF INTEREST
38	1	1	C0001	16.39
38	2	1	C0002	15.59
38	3	1	C0003	25.66
38	4	1	C0004	42.36

SEE SHEET 4

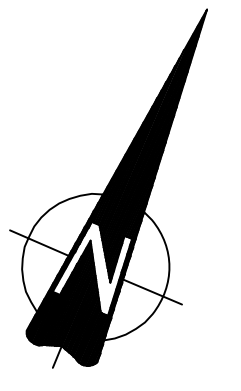
THIS SHEET HAS BEEN REDRAWN USING  
 COMPUTER AIDED DRAFTING/DESIGN (CAD/D) BASED ON THE MAP PREPARED BY GEORGE W. EDWARDS, P.L.S. DATED AUGUST 1975.

REVISIONS		
DATE	NAME	LIC. No.
5/20/11	RICHARD A. MORALLE, P.E., P.L.S.	GB25863
12/31/13	MICHAEL S. FINNEGAN, P.L.S.	GS34851
12/1/15	JOHN J. STEFANI, P.L.S.	24271
2/4/2020	ROBERT K. SANCHEZ, P.L.S.	43294
5/19/2020	ROBERT K. SANCHEZ, P.L.S.	43294
6/10/2020	ROBERT K. SANCHEZ, P.L.S.	43294
6/16/2020	ROBERT K. SANCHEZ, P.L.S.	43294
10/2/2020	ROBERT K. SANCHEZ, P.L.S.	43294

THIS MAP REVISED AS NOTED  
 ORIGINAL APPROVED AS A TAX MAP BY THE N.J. DIVISION OF TAXATION  
 APRIL 30, 2008  
 SERIAL NO. 918

**TAX MAP**  
**BOROUGH OF KEYPORT**  
 MONMOUTH COUNTY, NEW JERSEY  
 SCALE: 1" = 100'  
 AUGUST 2007  
**JAMES K. WALZ**  
 PROFESSIONAL LAND SURVEYOR  
 NEW JERSEY LICENSE NO. 24GS03402400  
 833 ROUTE 9 NORTH, CAPE MAY COURT HOUSE, NJ 08210  
 TO SHOW CONDITIONS AS OF DECEMBER 2013





NOTE:  
SOME RIPARIAN AREAS DETAILED ON THIS SHEET ARE NOT TO SCALE.  
THIS SHEET HAS BEEN REDRAWN USING COMPUTER AIDED DRAFTING/DESIGN (CAD/D) BASED ON THE MAP PREPARED BY GEORGE W. EDWARDS, P.L.S. DATED AUGUST 1975.

THIS MAP REVISED AS NOTED  
ORIGINAL APPROVED AS A TAX MAP BY THE N.J DIVISION OF TAXATION  
APRIL 30, 2008  
SERIAL NO. 918

**TAX MAP**  
**BOROUGH OF KEYPORT**  
MONMOUTH COUNTY, NEW JERSEY  
SCALE: 1" = 100'  
AUGUST 2007  
**JAMES K. WALZ**  
PROFESSIONAL LAND SURVEYOR  
NEW JERSEY LICENSE NO. 24GS03402400  
833 ROUTE 9 NORTH, CAPE MAY COURT HOUSE, NJ 08210  
TO SHOW CONDITIONS AS OF DECEMBER 2013

SHEET 11

DATE	NAME	LIC. No.
5/20/11	RICHARD A. MORALLE, P.E., P.L.S.	GB25863
12/31/11	RICHARD A. MORALLE, P.E., P.L.S.	GB25863
6/30/13	RICHARD A. MORALLE, P.E., P.L.S.	GB25863
12/31/13	MICHAEL S. FINNEGAN, P.L.S.	GS34851
12/1/15	JOHN J. STEFANI, P.L.S.	24271
2/3/2020	ROBERT K. SANCHEZ, P.L.S.	43294
5/18/20	ROBERT K. SANCHEZ, P.L.S.	43294

SHEET 7

SHEET 8

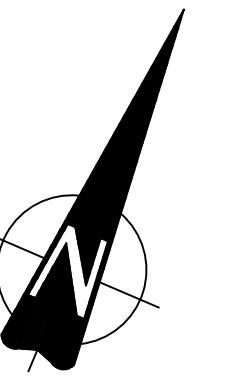
SHEET 12

SHEET 10

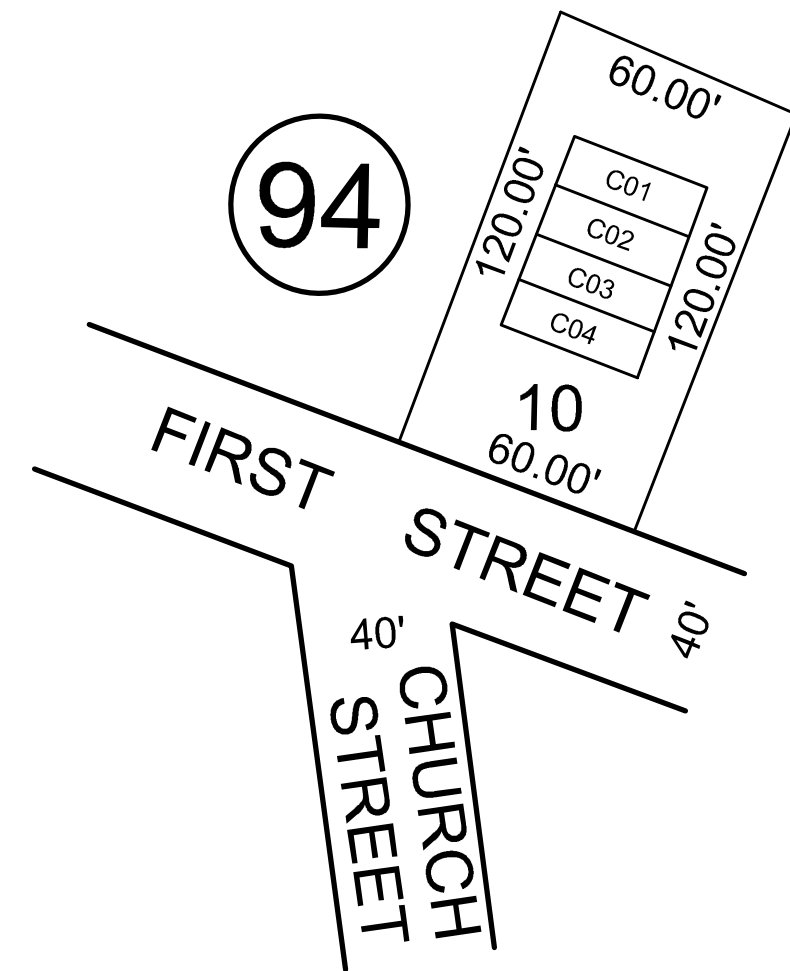
SHEET 11

SHEET 10



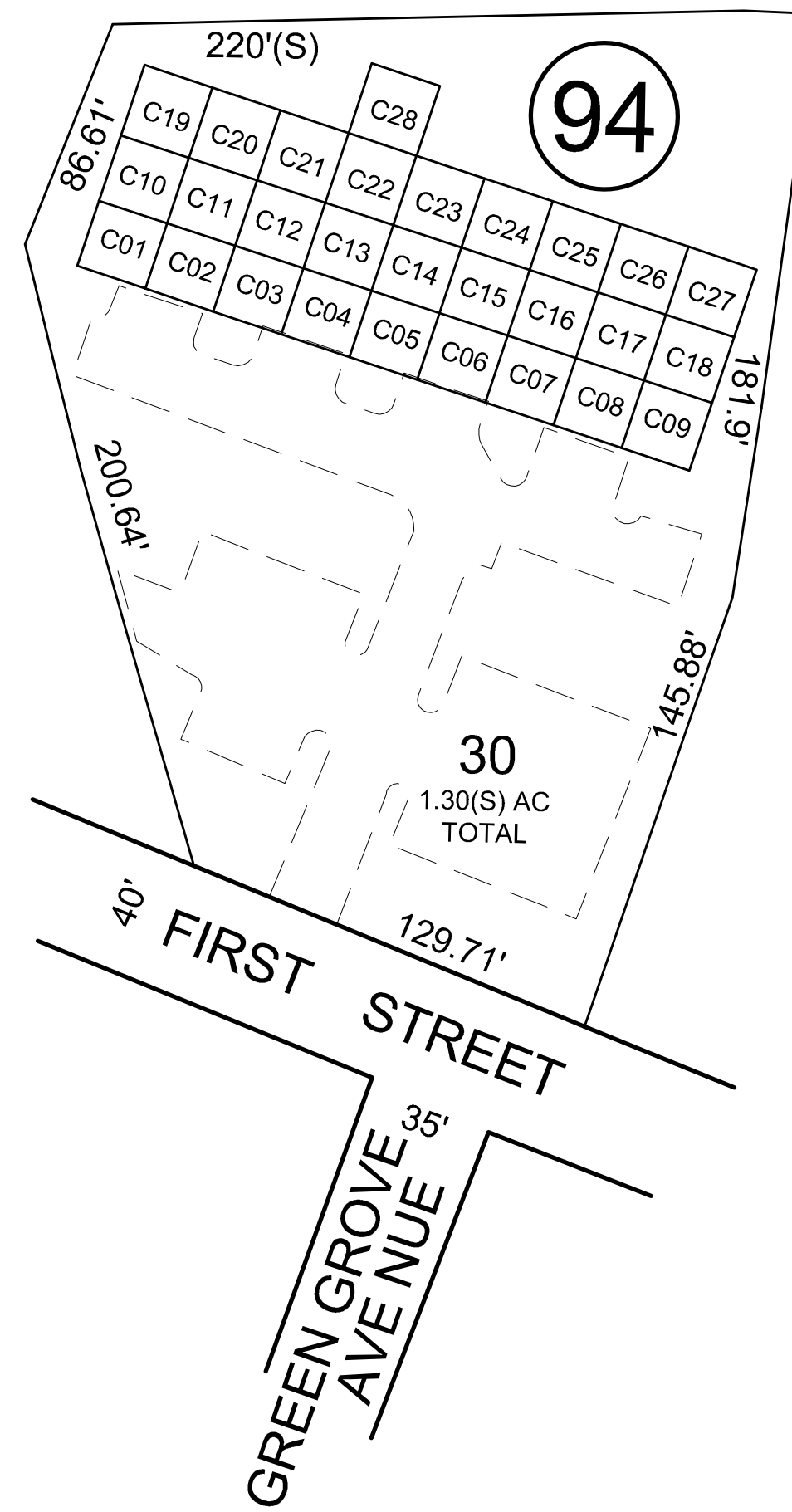


REVISIONS		
DATE	NAME	LIC. No.



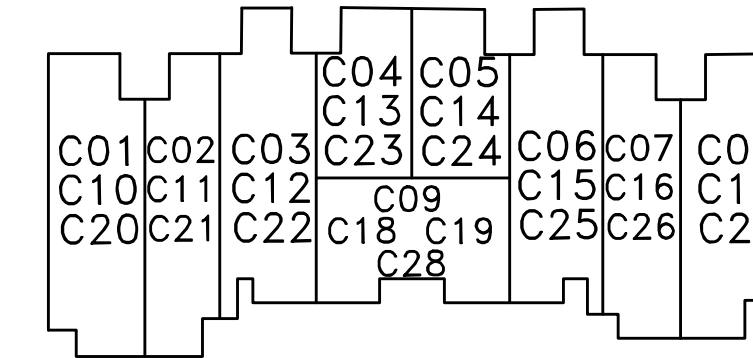
"55 FIRST STREET CONDOMINIUMS"  
 BLOCK 94  
 LOT 10  
 SEE SHEET 9

55 FIRST STREET CONDOMINIUMS				
LOT #	QUALIFIER	UNIT NUMBER	AREA (SF)	PERCENTAGE (%)
10	C01	3	1,317	25.00
10	C02	1	1,686	25.00
10	C03	4	2,090	25.00
10	C04	2	1,713	25.00



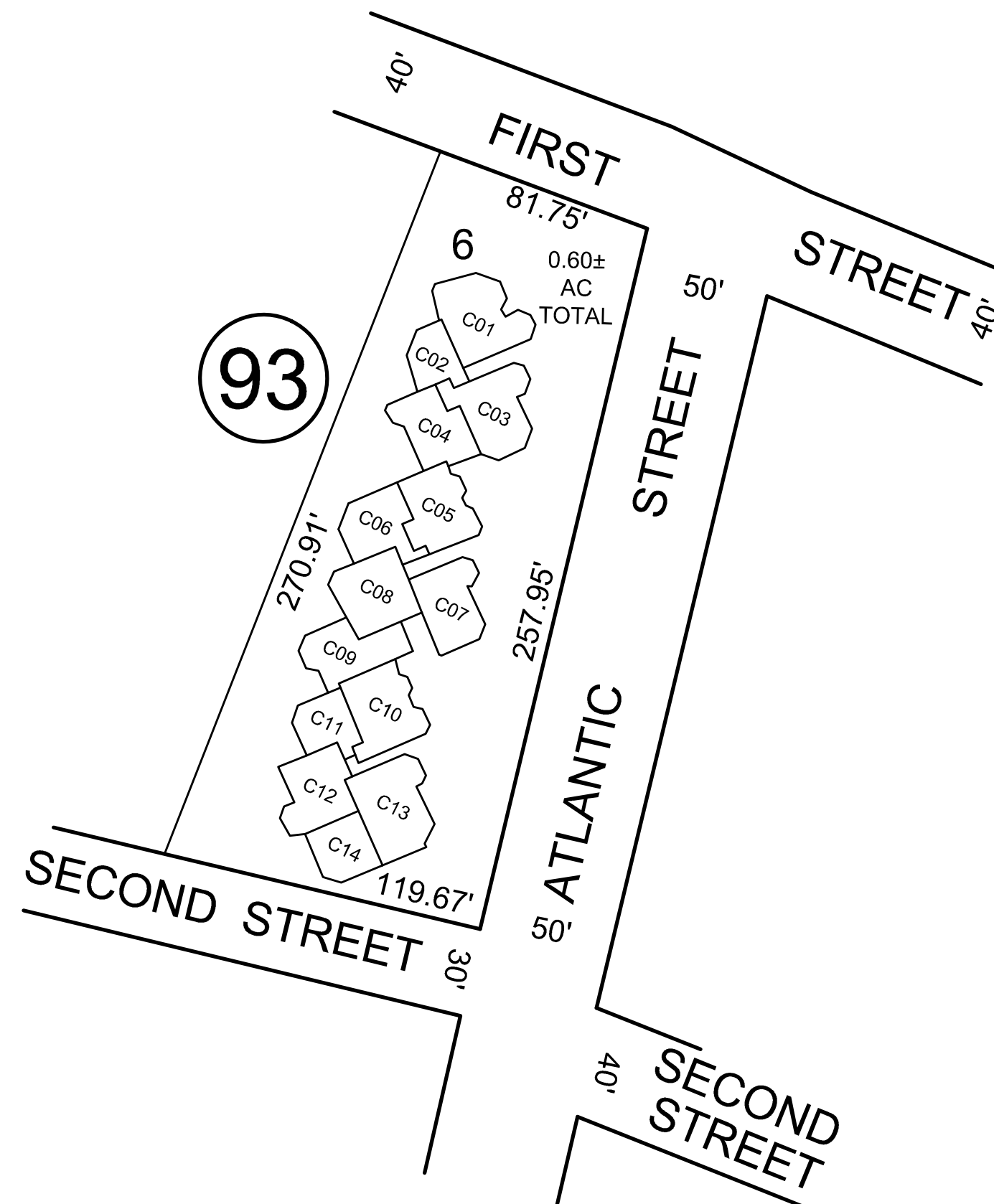
"HARBORVIEW AT KETPORT CONDOMINIUMS"

BLOCK 94  
 LOT 30  
 SEE SHEET 9

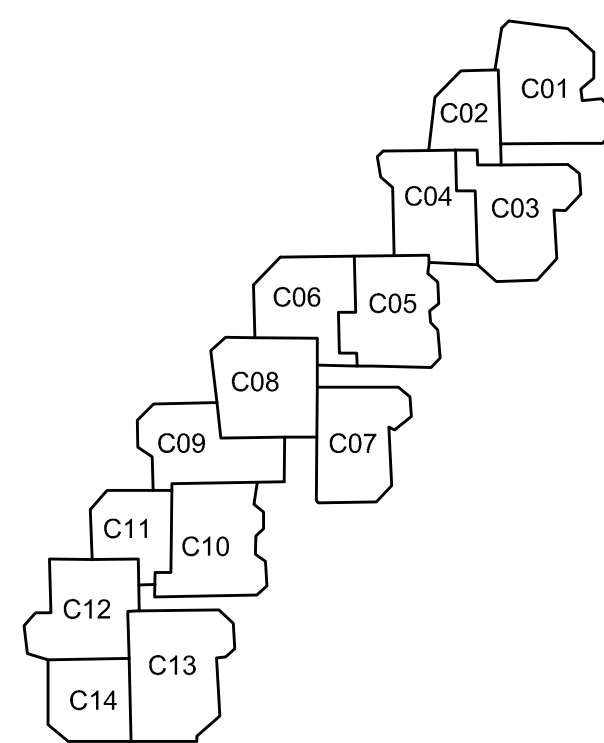


TYPICAL FLOOR PLAN  
 BUILDING 1

HARBORVIEW AT KEYPORT CONDOMINIUMS				
LOT #	QUALIFIER	FLOOR	AREA (SF)	% OF INTEREST
30	C01	1	1,130	4.166
30	C02	1	1,130	4.166
30	C03	1	1,117	4.166
30	C04	1	1,130	4.166
30	C05	1	1,130	4.166
30	C06	1	1,130	4.166
30	C07	1	1,130	4.166
30	C08	1	1,130	4.166
30	C09	1	1,130	4.166
30	C10	2	1,409	4.166
30	C11	2	1,409	4.166
30	C12	2	1,409	4.166
30	C13	2	1,409	4.166
30	C14	2	1,409	4.166
30	C15	2	1,409	4.166
30	C16	2	1,409	4.166
30	C17	2	1,409	4.166
30	C18	2	1,409	4.166
30	C19	2	1,409	4.166
30	C20	3	2,099	4.166
30	C21	3	2,099	4.166
30	C22	3	2,099	4.166
30	C23	3	2,099	4.166
30	C24	3	2,099	4.166
30	C25	3	2,099	4.166
30	C26	3	2,099	4.166
30	C27	3	2,099	4.166
30	C28	3	2,099	4.166



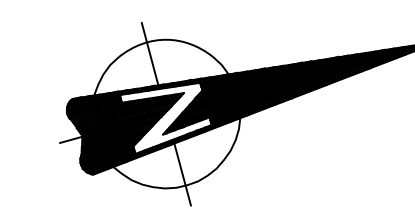
"SEALOFT, A CONDOMINIUM"  
 BLOCK 93  
 LOT 6  
 SEE SHEET 9



TYPICAL FLOOR PLAN

SEALOFT, A CONDOMINIUM					
LOT #	QUALIFIER	UNIT NUMBER	UNIT TYPE	AREA (SF)	PERCENTAGE (%)
6	C01	1	CLIPPER	775	7.1428
6	C02	2	SPINNAKER	360	7.1428
6	C03	3	CLIPPER	720	7.1428
6	C04	4	GALLEON	590	7.1428
6	C05	5	CLIPPER	640	7.1428
6	C06	6	SPINNAKER	555	7.1428
6	C07	7	CLIPPER	615	7.1428
6	C08	8	GALLEON	685	7.1428
6	C09	9	SPINNAKER	610	7.1428
6	C10	10	CLIPPER	710	7.1428
6	C11	11	SPINNAKER	410	7.1428
6	C12	12	CLIPPER	635	7.1428
6	C13	13	CLIPPER	810	7.1428
6	C14	14	SPINNAKER	445	7.1428

TAX MAP  
 BOROUGH OF KEYPORT  
 MONMOUTH COUNTY, NEW JERSEY  
 SCALE: 1" = 50' AUGUST 2007  
 MICHAEL S. FINNEGAN, P.L.S.  
 PROFESSIONAL LAND SURVEYOR  
 NEW JERSEY LICENSE NO. 24GS03485100  
 11 TINDALL ROAD, MIDDLETOWN, NJ 07748  
 TO SHOW CONDITIONS AS OF DECEMBER 2013

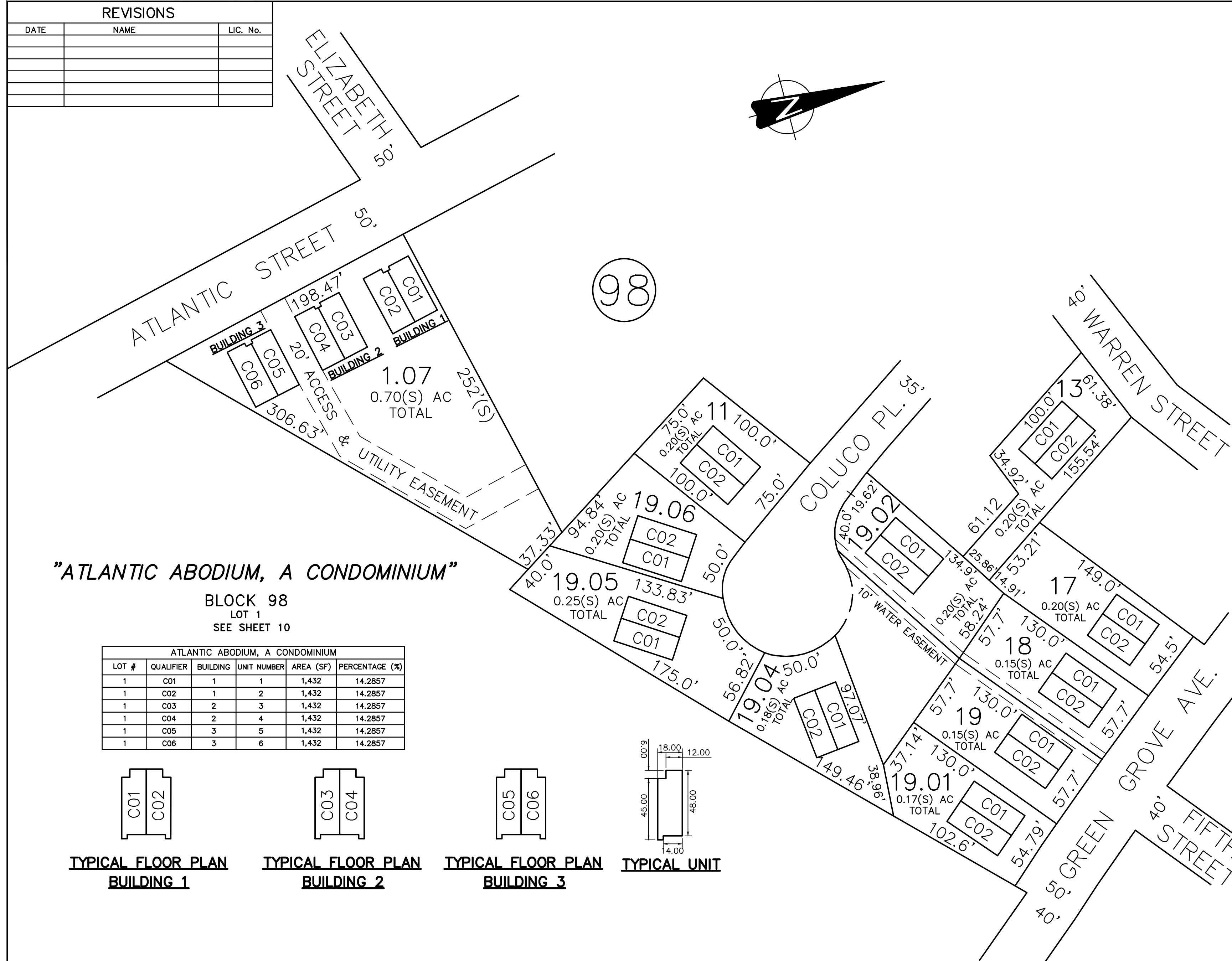


REVISIONS		
DATE	NAME	LIC. No.
5/20/11	RICHARD A. MORALLE, P.E., P.L.S.	GB25863
12/31/13	MICHAEL S. FINNEGAN, P.L.S.	GS34851
12/1/15	JOHN J. STEFANI, P.L.S.	24271
2/5/2020	ROBERT K. SANCHEZ, P.L.S.	43294

THIS MAP REVISED AS NOTED  
 ORIGINAL APPROVED AS A  
 TAX MAP BY THE  
 N.J. DIVISION OF TAXATION  
 APRIL 30, 2008  
 SERIAL NO. 918

**TAX MAP**  
**BOROUGH OF KEYPORT**  
 MONMOUTH COUNTY, NEW JERSEY  
 SCALE: 1" = 100' AUGUST 2007  
**JAMES K. WALZ**  
 PROFESSIONAL LAND SURVEYOR  
 NEW JERSEY LICENSE NO. 24GS03402400  
 833 ROUTE 9 NORTH, CAPE MAY COURT HOUSE, NJ 08210  
 TO SHOW CONDITIONS AS OF DECEMBER 2013

REVISIONS		
DATE	NAME	LIC. No.



**"34 GREEN GROVE AVENUE ASSOCIATION" "36 GREEN GROVE AVENUE ASSOCIATION"**

34 GREEN GROVE AVENUE ASSOCIATION				36 GREEN GROVE AVENUE ASSOCIATION					
LOT #	QUALIFIER	UNIT NUMBER	AREA (SF)	PERCENTAGE (%)	LOT #	QUALIFIER	UNIT NUMBER	AREA (SF)	PERCENTAGE (%)
18	C01	A	1,394	50.00	19	C01	A	1,394	50.00
18	C02	B	1,394	50.00	19	C02	B	1,394	50.00



**"38 GREEN GROVE AVENUE ASSOCIATION" "7-5 COLUCO PLACE ASSOCIATION"**

38 GREEN GROVE AVENUE ASSOCIATION				7-5 COLUCO PLACE ASSOCIATION					
LOT #	QUALIFIER	UNIT NUMBER	AREA (SF)	PERCENTAGE (%)	LOT #	QUALIFIER	UNIT NUMBER	AREA (SF)	PERCENTAGE (%)
19.01	C01	A	1,394	50.00	19.02	C01	A	1,394	50.00
19.01	C02	B	1,394	50.00	19.02	C02	B	1,394	50.00



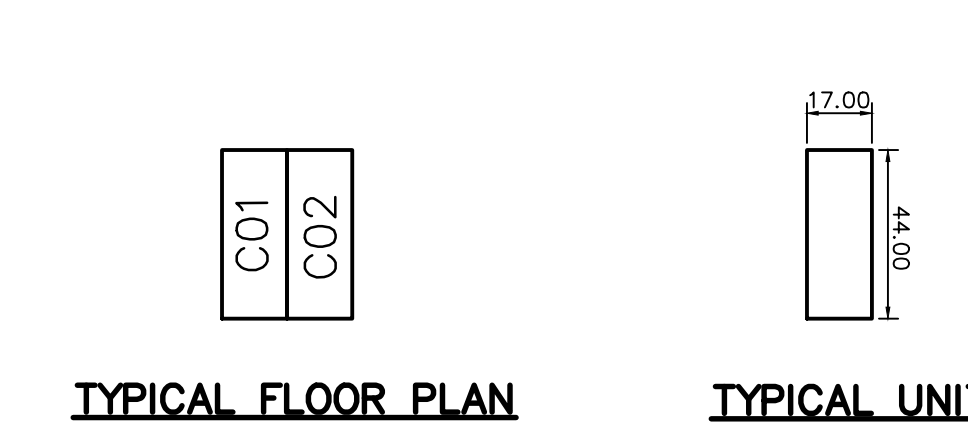
**"13-11 COLUCO PLACE ASSOCIATION" "14-12 COLUCO PLACE ASSOCIATION"**

13-11 COLUCO PLACE ASSOCIATION				14-12 COLUCO PLACE ASSOCIATION					
LOT #	QUALIFIER	UNIT NUMBER	AREA (SF)	PERCENTAGE (%)	LOT #	QUALIFIER	UNIT NUMBER	AREA (SF)	PERCENTAGE (%)
19.04	C01	A	1,394	50.00	19.05	C01	A	1,394	50.00
19.04	C02	B	1,394	50.00	19.05	C02	B	1,394	50.00



**"10-8 COLUCO PLACE ASSOCIATION"**

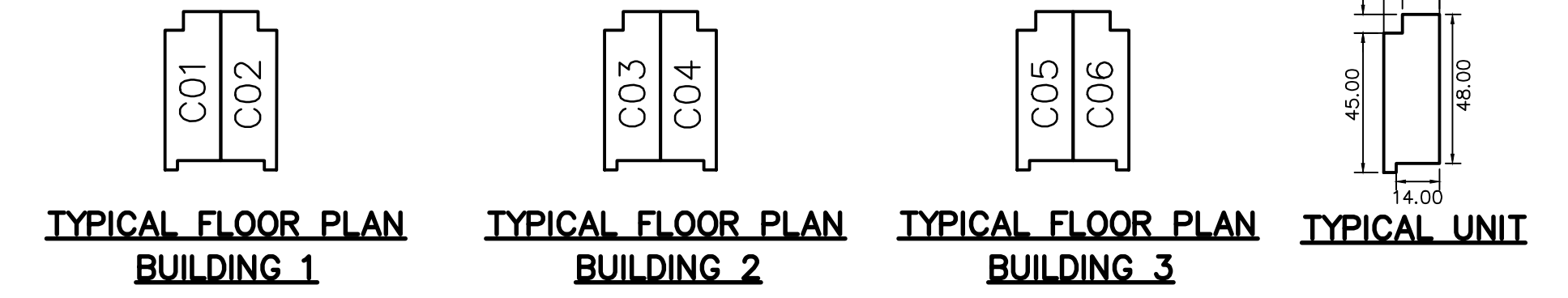
10-8 COLUCO PLACE ASSOCIATION				
LOT #	QUALIFIER	UNIT NUMBER	AREA (SF)	PERCENTAGE (%)
19.06	C01	A	1,394	50.00
19.06	C02	B	1,394	50.00



**"ATLANTIC ABODIUM, A CONDOMINIUM"**

BLOCK 98  
LOT 1  
SEE SHEET 10

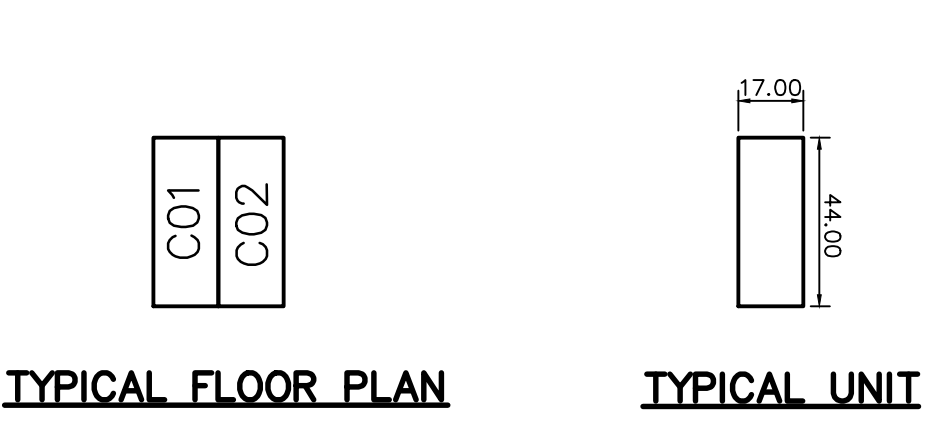
LOT #	QUALIFIER	BUILDING	UNIT NUMBER	AREA (SF)	PERCENTAGE (%)
1	C01	1	1	1,432	14.2857
1	C02	1	2	1,432	14.2857
1	C03	2	3	1,432	14.2857
1	C04	2	4	1,432	14.2857
1	C05	3	5	1,432	14.2857
1	C06	3	6	1,432	14.2857



**"6-4 COLUCO PLACE ASSOCIATION"**

BLOCK 98  
LOT 11  
SEE SHEET 10

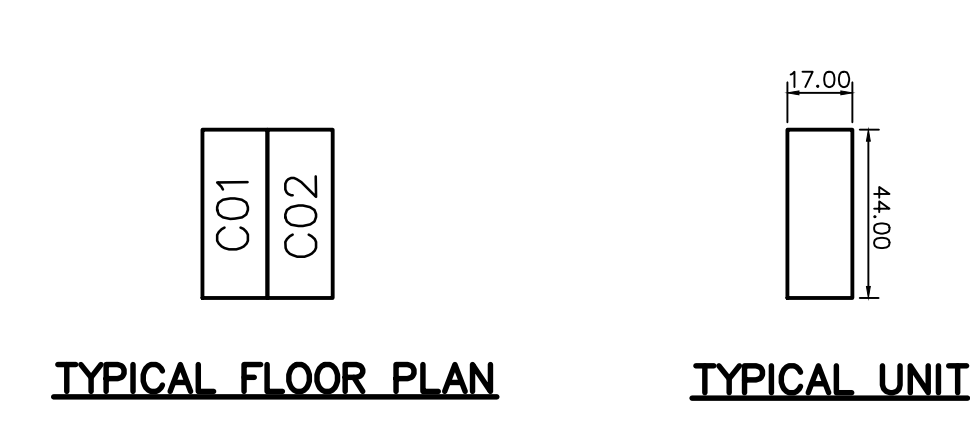
LOT #	QUALIFIER	UNIT NUMBER	AREA (SF)	PERCENTAGE (%)
11	C01	A	1,394	50.00
11	C02	B	1,394	50.00



**"104-102 WARREN STREET ASSOCIATION"**

BLOCK 98  
LOT 13  
SEE SHEET 10

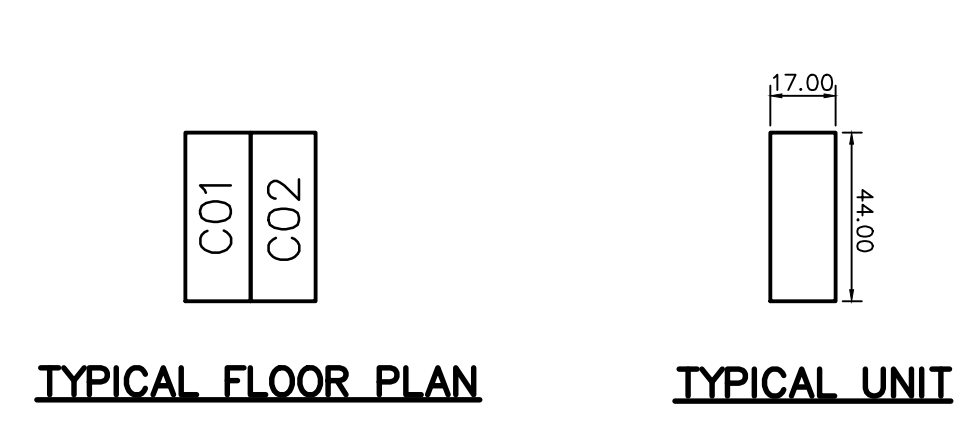
LOT #	QUALIFIER	UNIT NUMBER	AREA (SF)	PERCENTAGE (%)
13	C01	A	1,394	50.00
13	C02	B	1,394	50.00



**"32 GREEN GROVE AVENUE ASSOCIATION"**

BLOCK 98  
LOT 17  
SEE SHEET 10

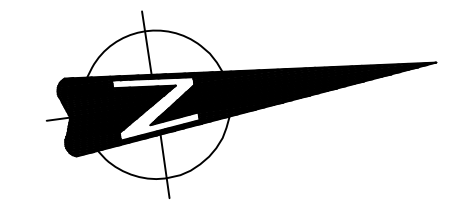
LOT #	QUALIFIER	UNIT NUMBER	AREA (SF)	PERCENTAGE (%)
17	C01	A	1,394	50.00
17	C02	B	1,394	50.00



**TAX MAP**  
**BOROUGH OF KEYPORT**  
 MONMOUTH COUNTY, NEW JERSEY  
 SCALE: 1" = 50' AUGUST 2007  
**MICHAEL S. FINNEGAN, P.L.S.**  
 PROFESSIONAL LAND SURVEYOR  
 NEW JERSEY LICENSE NO. 24GS03485100  
 11 TINDALL ROAD, MIDDLETOWN, NJ 07748  
 TO SHOW CONDITIONS AS OF DECEMBER 2013



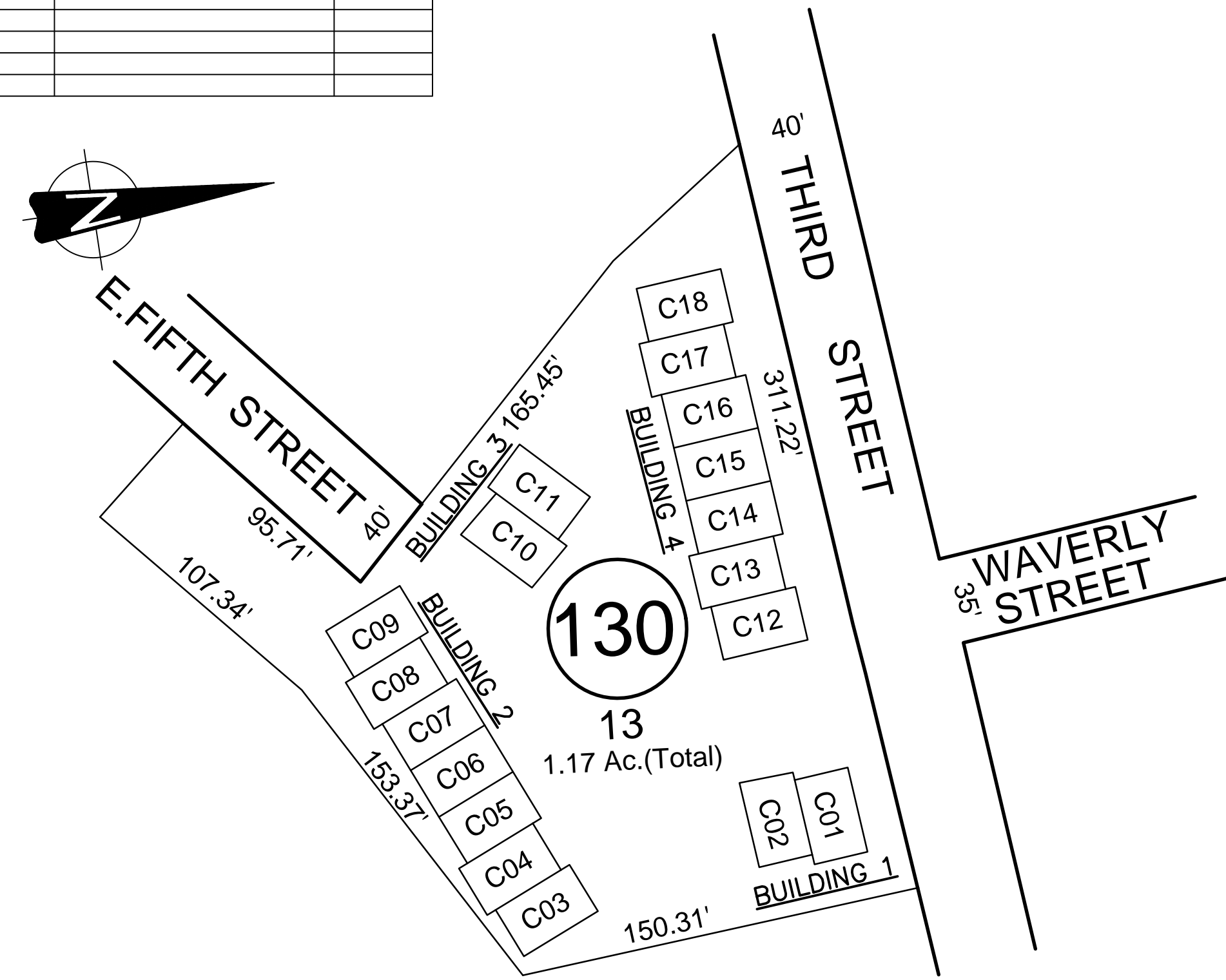
REVISIONS		
DATE	NAME	LIC. No.
12/31/13	MICHAEL S. FINNEGAN, P.L.S.	CS34851
5/18/20	ROBERT K. SANCHEZ, P.L.S.	43294
10/6/20	ROBERT K. SANCHEZ, P.L.S.	43294



THIS SHEET HAS BEEN REDRAWN USING COMPUTER AIDED DRAFTING/DESIGN (CAD/D) BASED ON THE MAP PREPARED BY GEORGE W. EDWARDS, P.L.S. DATED AUGUST 1975.

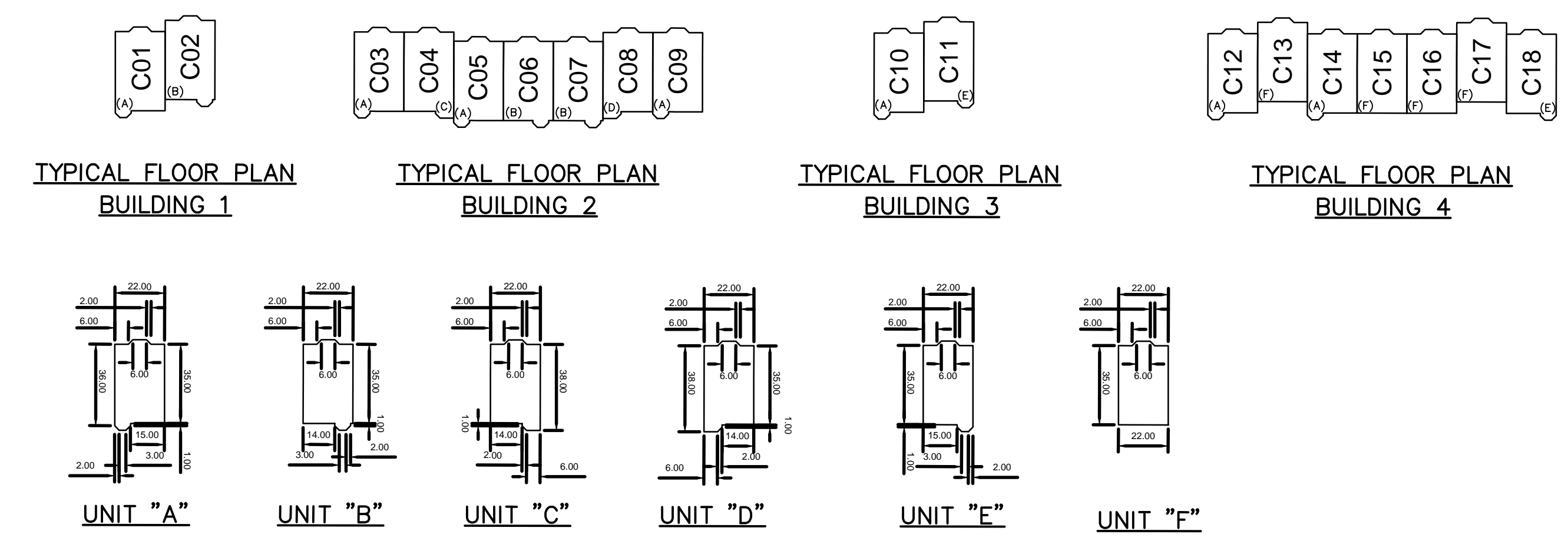
<p>THIS MAP REVISED AS NOTED</p> <p>ORIGINAL APPROVED AS A TAX MAP BY THE N.J. DIVISION OF TAXATION</p> <p>APRIL 30, 2008 SERIAL NO. 918</p>	<p>TAX MAP</p> <p>BOROUGH OF KEYPORT</p> <p>MONMOUTH COUNTY, NEW JERSEY</p> <p>SCALE: 1" = 100' AUGUST 2007</p> <p>JAMES K. WALZ</p> <p>PROFESSIONAL LAND SURVEYOR</p> <p>NEW JERSEY LICENSE NO. 24GS03402400</p> <p>833 ROUTE 9 NORTH, CAPE MAY COURT HOUSE, NJ 08210</p> <p>TO SHOW CONDITIONS AS OF DECEMBER 2013</p>
--	--

REVISIONS		
DATE	NAME	LIC. No.



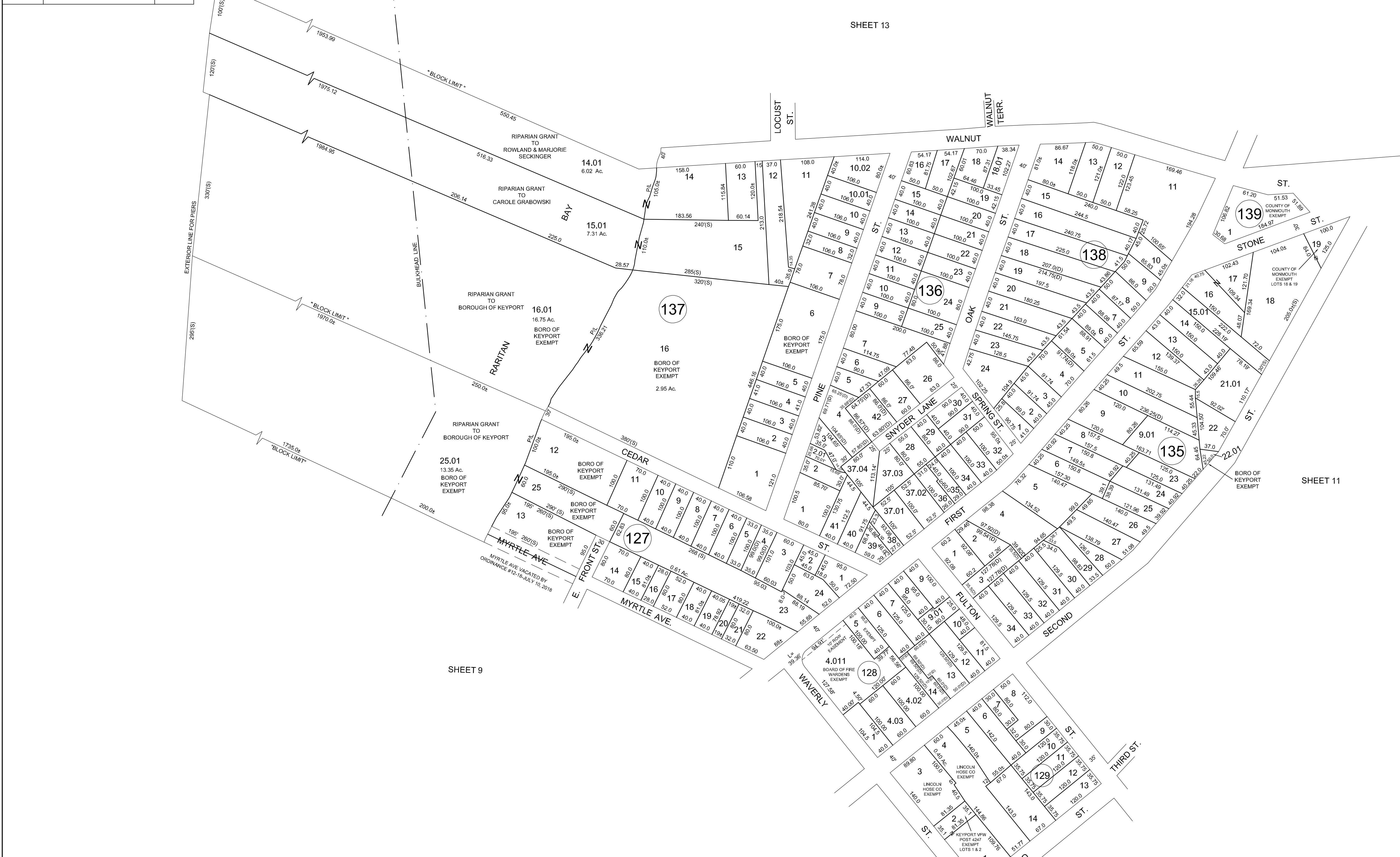
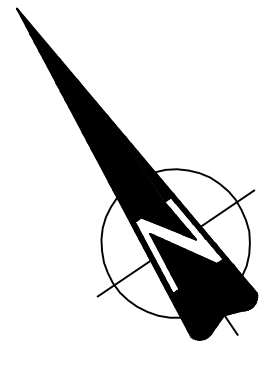
"HAVEN OFF THE BAY CONDOMINIUM"  
 BLOCK 130  
 LOT 13  
 SEE SHEET 11

HAVEN OFF THE BAY CONDOMINIUM					
LOT #	QUALIFIER	BUILDING	UNIT NUMBER	AREA (SF)	PERCENTAGE (%)
13	C01	1	A1	2,073	5.555
13	C02	1	A2	2,025	5.555
13	C03	2	B1	2,025	5.555
13	C04	2	B2	2,027	5.555
13	C05	2	B3	2,025	5.555
13	C06	2	B4	2,025	5.555
13	C07	2	B5	2,025	5.555
13	C08	2	B6	2,027	5.555
13	C09	2	B7	2,025	5.555
13	C10	3	C1	2,025	5.555
13	C11	3	C2	2,025	5.555
13	C12	4	D1	2,087	5.555
13	C13	4	D2	2,091	5.555
13	C14	4	D3	2,087	5.555
13	C15	4	D4	2,112	5.555
13	C16	4	D5	2,070	5.555
13	C17	4	D6	2,091	5.555
13	C18	4	D7	2,087	5.555



**TAX MAP**  
**BOROUGH OF KEYPORT**  
 MONMOUTH COUNTY, NEW JERSEY  
 SCALE: 1" = 50' AUGUST 2007  
**MICHAEL S. FINNEGAN, P.L.S.**  
PROFESSIONAL LAND SURVEYOR  
 NEW JERSEY LICENSE NO. 24CS03485100  
 11 TINDALL ROAD, MIDDLETOWN, NJ 07748  
 TO SHOW CONDITIONS AS OF DECEMBER 2013

REVISIONS		
DATE	NAME	LIC. No.
12/31/13	MICHAEL S. FINNEGAN, P.L.S.	CS34851
5/18/20	ROBERT K. SANCHEZ, P.L.S.	43294
6/17/20	ROBERT K. SANCHEZ, P.L.S.	43294

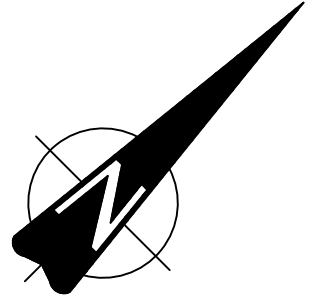
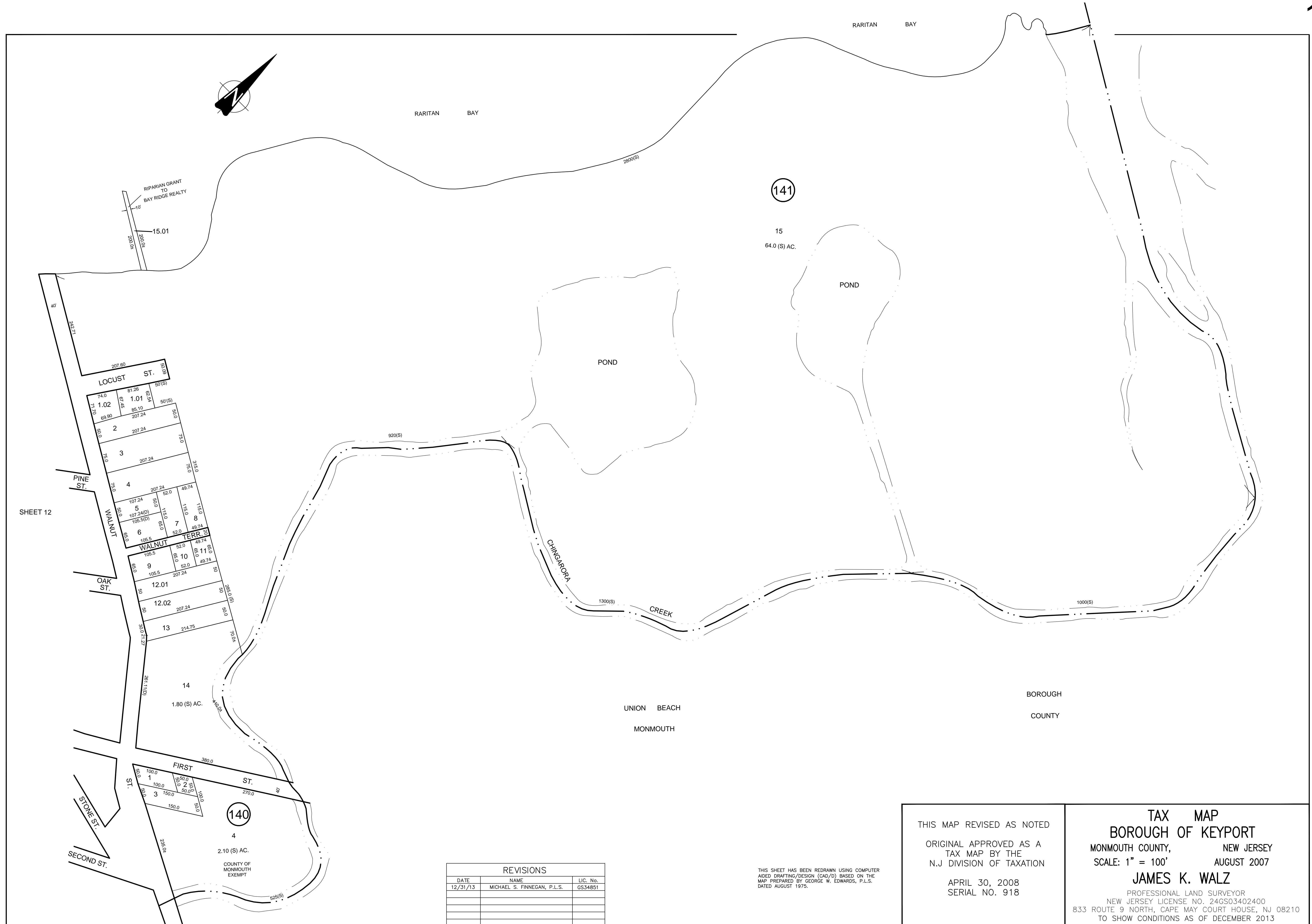


THIS SHEET HAS BEEN REDRAWN USING COMPUTER AIDED DRAFTING/DESIGN (CAD/D) BASED ON THE MAP PREPARED BY GEORGE W. EDWARDS, P.L.S. DATED AUGUST 1975.

THIS MAP REVISED AS NOTED  
 ORIGINAL APPROVED AS A  
 TAX MAP BY THE  
 N.J DIVISION OF TAXATION  
 APRIL 30, 2008  
 SERIAL NO. 918

TAX MAP  
 BOROUGH OF KEYPORT  
 MONMOUTH COUNTY, NEW JERSEY  
 SCALE: 1" = 100'  
 AUGUST 2007  
 JAMES K. WALZ  
 PROFESSIONAL LAND SURVEYOR  
 NEW JERSEY LICENSE NO. 24GS03402400  
 833 ROUTE 9 NORTH, CAPE MAY COURT HOUSE, NJ 08210  
 TO SHOW CONDITIONS AS OF DECEMBER 2013





141

15  
64.0 (S) AC.

140

4  
2.10 (S) AC.  
COUNTY OF  
MONMOUTH  
EXEMPT

REVISIONS		
DATE	NAME	LIC. No.
12/31/13	MICHAEL S. FINNEGAN, P.L.S.	GS34851

THIS SHEET HAS BEEN REDRAWN USING COMPUTER AIDED DRAFTING/DESIGN (CAD/D) BASED ON THE MAP PREPARED BY GEORGE W. EDWARDS, P.L.S. DATED AUGUST 1975.

THIS MAP REVISED AS NOTED  
ORIGINAL APPROVED AS A  
TAX MAP BY THE  
N.J DIVISION OF TAXATION  
APRIL 30, 2008  
SERIAL NO. 918

**TAX MAP**  
**BOROUGH OF KEYPORT**  
MONMOUTH COUNTY, NEW JERSEY  
SCALE: 1" = 100'  
AUGUST 2007  
**JAMES K. WALZ**  
PROFESSIONAL LAND SURVEYOR  
NEW JERSEY LICENSE NO. 24GS03402400  
833 ROUTE 9 NORTH, CAPE MAY COURT HOUSE, NJ 08210  
TO SHOW CONDITIONS AS OF DECEMBER 2013